

Connectix Cabling Systems™

FTTX Street Cabinets - Type 2

Connectix FTTX Street cabinets are our British manufactured external cabinet solutions designed for deployments within Fibre-to-the-Home (FTTH) single dwelling and rural broadband, Fibre-to-the-Business (FTTB), ISP new and retro build developments and FTTX infrastructure projects. Manufactured by Connectix in the UK, Connectix Street Cabinets are available as standard options or can be customised for specific telecom carrier requirements. Using our experienced CAD design team and fibre optic installation engineering skills, we can custom design for vendor specific GPON/P2P network hardware, spliced or pre-connectorised fibre deployment and a range of cooling, power (including digital electricity options) and environmental options.

FTTX Street Cabinet Type 2

The Connectix FTTX Street Cabinet Type 2 is a front access double-door cabinet providing a solid robust enclosure designed to facilitate deeper 19" equipment, with additional facilities for mounting electrical metering, power distribution equipment and backup batteries. Featuring 24U of equipment space and adjustable 19" mounting profiles front and rear for hardware rack mounting and additional options to mount electrical supply and meters, fuse boxes or UPS.

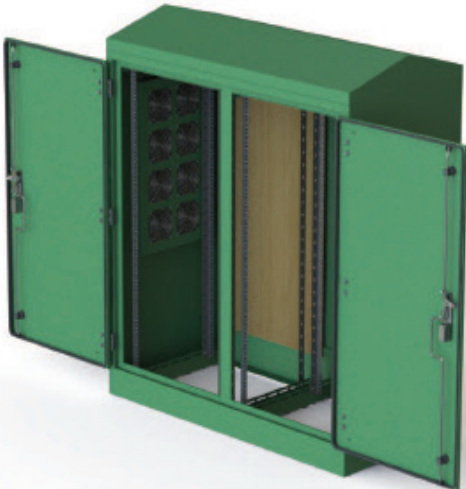
Ventilation is provided through louvred slots manufactured within the front and rear lower sections of the street cabinet door and back. The cabinets are supplied with three thermostatically controlled fans in the roof for ventilation and cooling of internal networking hardware. Ventilation apertures feature a removable mesh screen to protect against vermin and insect access.

A marine ply board is fitted in the side for mounting LED switchgear accessories and for security the front access door features a three-point locking mechanism and security lock. The large base aperture provides plenty of space for cabling into the cabinet with an integral

Features

- Fully welded stainless steel construction
- Pitched Roof Stainless Steel
- Double doors c/w swing handle & 3 point locking
- Integral 100mm raised plinth for mounting onto concrete pad
- 4 sets of adjustable 19" mounting profiles front and rear
- Large cable aperture in base of cabinet
- 2 off 8 way fans trays fitted inside with external weather cowls
- Powder coated green as standard

Technical Specification	
Dimensions WDH (mm)	1200x600x1370
Bolt hole Pitch	12 diameter holes for M10 Bolts 530mm (front to back) 334mm (4 holes left to right)
Frame Height	24U
Frame Depth	515mm (19" post adj depth)
Front Frame Space	68mm (19" post adj depth)
Standard Post Pitch	400mm (19" post adj depth)
Side Backboard	2 off panels 1060 x 496 x 12mm thk
Ventilation	2 x 8-way side mounted extraction fans External side weather cowls
IP weather rating	IP65
Weight	148Kgs



Connectix Cabling Systems™

FTTX Street Cabinets - Type 2

Ordering Information	
Part Number	Description
009-929-069-03	Connectix FTTX Street Cabinet 2mm Galvanised Steel Double Door Green
009-929-069-09	Connectix FTTX Street Cabinet 2mm Stainless Steel Double Door Green
009-929-068-01	Connectix FTTX Street Cabinet 2mm Galvanised Steel Double Door Black
009-929-068-04	Connectix FTTX Street Cabinet 2mm Stainless Steel Double Door Black
009-929-068-02	Connectix FTTX Street Cabinet 2mm Galvanised Steel Double Door Grey
009-929-068-06	Connectix FTTX Street Cabinet 2mm Stainless Steel Double Door Grey