

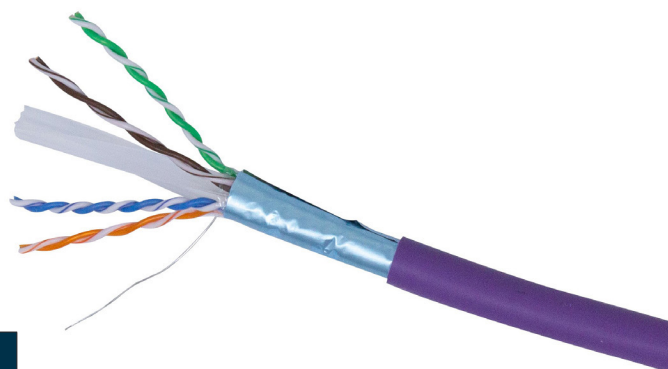
Category 6 Solid F/UTP LSZH Eca Cable

Connectix Cat 6 F/UTP Eca LSZH Cable is designed for high speed LANs including Gigabit Ethernet applications. When used with Connectix FTP Modules and Panels it gives the exceptional

performance required for transmission over all four pairs. The cable is supplied in easy to use boxes and is available with standard purple LSZH outer sheaths.

Features & Benefits

- Supplied in easy pull boxes for easy installation
- Excellent performance - exceeding ANSI/TIA-568-C
- Metre marked
- Excellent electromagnetic compatibility
- 23 AWG solid copper cores
- Suitable for Gigabit Ethernet applications
- 25 Year System Warranty Available



Cable Specifications	
Inner Conductor	0.55mm
Insulation	HD polyethylene
Screen	Overall aluminium / polyester type longitudinally applied, aluminium side in with a 0.40 mm tinned copper drain wire applied under the screen
Construction	4 twisted pair cables together with spine foil shield
Sheath	Low Smoke Zero Halogen (LSZH)
RAL Colour	Violet - 4001
Overall Diameter	7.6mm
Min. Bending Radius Operation	30mm
Impedance	100+/- 15 Ohms
Velocity Ratio (NVP)	72%
Operating Temperature Range	-10°C to +50°C
Euroclass Rating	Eca
Installation Temperature Range	0°C to +40°C
LSZH Sheath Conforms To	IEC 60332-1, IEC 61034 and IEC 60754 and ISO 11807 CENELEC EN 50173
Colour Code	Pair 1: White/Blue - Blue Pair 2: White/Orange - Orange Pair 3: White/Green - Green Pair 4: White/Brown - Brown

Electrical Specifications				
DC Resistance Unbalance	Max 2.5			
Insulation Resistance	>5000mΩ*km			
Capacitance Unbalance (pair to ground)	<5.6nF/100 m			
Characteristic Impedance @1-250 MHz	100 Ohms ± 15 Ohms			
Transfer Impedance (mΩ/m)	1MHz	10MHz	30MHz	100MHz

Cable Construction	
01 PET	05 Aluminium Foil
02 Copper Conductor	06 Jacket
03 HDPE Insulation	07 Drain Wire
04 Cross Filler	08 Rip Cord

Ordering Information	
Product Description	Part Number
Cat 6 Solid F/UTP Eca LSZH Cable	001-004-004-15