

Faceplates & Accessories

Standard Backboxes

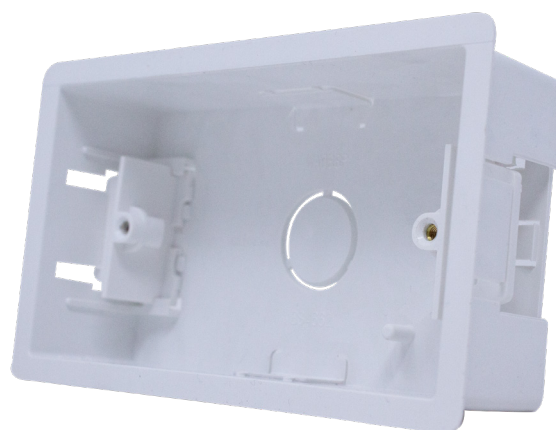
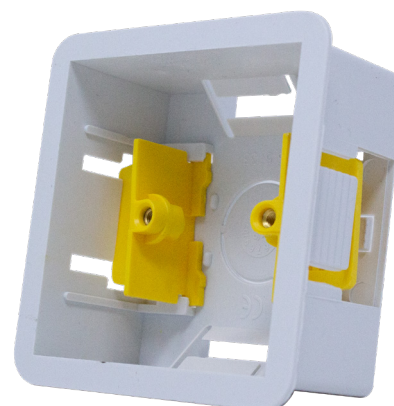
Connectix Standard Faceplates are available in compact depth, single and dual gang versions, and have been designed to fit all industry standard modules. All Connectix faceplates are supplied with fixing screws and come finished as standard in an attractive high gloss white.

Connectix backboxes are available in single and dual gang with a choice of surface mounted and flush mounted dry lined wall versions. Surface mount boxes feature knock outs for mini trunking adaptors. Dry lining wall boxes are suitable for mounting into 6-14 mm thick board and can easily cope with irregular shaped aperture sizes. Swivelling snap out clamps will grip any standard thickness of building board tightly.

Features and Benefits

Backboxes

- Tough shatter resistant material
- Designed for ease of use
- Uncluttered internal design



Ordering Information	
Product Description	Part Number
Dry Lining Single Gang	012-006-001-001
Dry Lining Double Gang	012-006-002-001
CCS 32 mm White Single Gang	008-010-001-00
CCS 32 mm White Dual Gang	008-010-002-00

Product Specifications				
Dimensions	Back Box			
	Single	Dual	Dry Line	
			Std	Dual
Width (mm)	87	148	87	148
Height (mm)	87	87	87	87
External Depth (mm)	32	32	34	
Internal Depth (mm)	29.5	29.5	32	
Backbox	Dry Lining Single Gang	Dry Lining Double Gang	CCS 32 mm White Single Gang	CCS 32 mm White Dual Gang